

乳癌診療指引

一、參與討論同仁

主席	沈陳石銘教授 (乳房外科)	
臺北癌症中心	李冠德院長 (血腫科)	趙祖怡副院長 (血腫科)
附設醫院	洪進昇部長 (乳房外科)	王文科主任 (乳房外科)
	賴欣宜醫師 (放射科)	韓閔芝個管師 (癌症中心)
	呂隆昇醫師 (放腫科)	黃慧寧個管師 (癌症中心)
萬芳醫院	張渭文主任 (乳房外科)	姚敏思醫師 (放射科)
	陳威宇主任 (病理科)	劉育辰個管師 (癌症中心)
雙和醫院	蘇智銘醫師 (乳房外科)	王惠儀個管師 (癌症中心)
		蔡吉兒領航師 (癌症中心)

二、討論日期：110 年 11 月 09 日

三、校稿人員：王文科主任 / 韓閔芝個管師

111 年版與上一版差異：

110 年修訂版

《乳癌診療指引共識 -1》

1. 修訂：臨床檢查：病理報告（含 ER/PR/ Her-2(optional)
2. 修訂：輔助性治療：Whole breast radiotherapy
3. 修訂：* 乳房保留手術後輔助性全乳放射治療可以顯著減少局部復發達 50%，若患者與乳癌醫療團隊經由醫病共同決策過程 (Shared decision making, SDM) 後同意該個案屬於低復發風險 +，有些患者可以選擇只接受局部切除 + 局部復發的風險因子：可觸及的腫塊、較大的腫瘤、high grade、接近的腫瘤邊緣、年輕患者

《乳癌診療指引共識 -2》

1. 修訂：臨床檢查 病史及理學檢查並加入生殖考量
2. 修訂：附註：
6. 輔助性放射治療技術以全乳照射為原則，低風險患者可考慮加速部分乳房照射，細節請參閱乳癌放射治療共識。
7. 若患者符合所有以下條件 (1) ≥ 70 歲、(2) 接受乳房保留手術、(3) pT1N0、(4)ER+PR+ 且已接受荷爾蒙治療，經團隊會議討論後可選擇不接受輔助性放射治療。
8. 血液檢查 (包含化療前 HBsAg 及 Anti-HCV test optional)
9. Hormonal therapy: Tamoxifen 服用 5-10 年 ;AI 服用 5-10 年 .
10. 主要治療 Total mastectomy=Simple mastectomy

111 年 修訂版

《乳癌診療指引共識 -1》

1. 增加：*tamoxifen 的標準劑量為 20 mg/ day，持續 5 年。
低劑量 * tamoxifen (5 mg/ day，連續 3 年) 僅在患者服用 20 毫克劑量時出現症狀或患者不願意或不能服用標準劑量時才可選擇

110 年修訂版

《乳癌診療指引共識 -3》

1. 修訂：臨床檢查 病史及理學檢查並加入生殖考量。
2. 修訂：

Post-mastectomy radiotherapy (PMRT)
indications:
Tumor > 5cm
N2 or N1 without axillary dissection
Strongly consider PMRT in N1 cases*
Positive margins
ECE (+)

3. 修訂：

附註：

4. Anti-Her2 treatment 依健保使用規定或自費使用。
5. 考慮接受化學治療或 Carrier 液檢查 (需包含化療前 HBsAg 及 Anti-HCV test) 。
6. *N1 低復發風險患者經患者與醫療團隊醫病共同決策過程後，全乳切除術後可免做輔助放療。低復發風險患者須滿足以下所有條件：年齡 ≥ 40 歲，T1，單一淋巴結侵犯，無淋巴血管侵犯，Her2/Neu (-)
7. 血液檢查 (包含化療前 HBsAg 及 Anti-HCV test optional)
8. 主要治療 Total mastectomy=Simple mastectomy
9. TNBC with residual invasive cancer following standard neoadjuvant therapy:
Consider adjuvant capecitabine (自費使用)
10. ER (-), PR (-) and Her2 (+) Node (+) patients: Consider adjuvant chemotherapy + Trastuzumab \pm Pertuzumab

111 年修訂版

110 年修訂版

《乳癌診療指引共識 -4》

1. 合併：臨床檢查：Bone scan and or/ PET-CT
2. 修訂：主要治療：Neoadjuvant C/T±Anti-Her-2For Her-2(+)
3. 修訂：附註 3 RT 參閱乳癌放射治療共識
4. 刪除：附註 7

《乳癌診療指引共識 -5》

1. 合併：臨床檢查：Bone scan and or/ PET-CT
2. 主要治療
 - Systemic chemotherapy ± Hormonal therapy ± Radiotherapy
 - ER and/or PR (+), Her-2 (-): Hormonal therapy ± CD4/6i or mTOR inhibitor or chemotherapy
 - Her-2(+)-> anti HER-2 therapy
 - Hormonal receptor(+)->PIK3CA mutation(optional) → PIK3CA inhibitor
 - TNBC → Immunotherapy(PD-L1 ≥ 1%)
 - PARP inhibitor(gBRCA mutation)
 - Best supportive care
 - Palliative surgery and other forms local treatment if needs
 - Clinical trial

111 年 修訂版

《乳癌診療指引共識 -4》

1. 增加：

<ol style="list-style-type: none"> 1. C/T+H/T 2. Her-2 (+) → Anti-Her-2 therapy (consider Trastuzumab for N0) 3. If Her-2(-) BRCA1/2 mutation(+) consider adjuvant Olaparib (≥ pT2 or ≥ pN1 for ER(-) or ≥ pN2 for ER(+))

2. 增加：附註 8. 針對 TNBC high risk 可以考慮 neoadjuvant 及 adjuvant immunotherapy

《乳癌診療指引共識 -5》

1. 主要治療
TNBC → Immunotherapy(PD-L1 ≥ 1% or CPS ≥ 10)

整頁新增《乳癌診療指引共識-6》

整頁新增《乳癌診療指引共識-7》

《乳癌診療指引共識-7》

1. 修訂：
- 1) Adjuvant Hormonal therapy
 - 2) Consider addition of adjuvant olaparib for 1 y for those with germline BRCA1/2 mutations and HR(+), HER2(-) tumors : if
 - 1) LNs \geq 4 positive (N2) after adjuvant chemotherapy , or 2) residual disease after preoperative therapy and CPS+EG score \geq 3
2. 修訂：
1. Ajuvant Adu-trastuzumab emtansine alone for 14 cycles. If ado-trastuzumab emtansine discontinued for toxicity, then trastuzumab \pm pertuzumab to complete one year of therapy and;
 2. Adjuvant Herceptin 1yr \pm extension Neratinib 1yr (if HR+)
 3. If HR-positive, adjuvant Hormonal therapy
3. 增加：
- TNBC + germline BRCA1/2 mutations, if
 - 1) \geq pT2 or \geq pN1 disease after adjuvant chemotherapy, or
 - 2) residual disease after preoperative chemotherapy Consider addition of adjuvant olaparib for 1 y

110 年修訂版

1. 修訂：《乳癌放射治療共識-1》**【全乳放射治療】**

應以電腦斷層影像定義標靶體積與正常危急器官

適應症：侵襲癌或原位癌經乳房保留手術術後

照射範圍：患側乳房

照射劑量：50-50.4Gy / 次數：25-28 次 或 40-42.5Gy / 次數：15-16 次

追加照射範圍：腫瘤切除空腔與其周圍

追加照射劑量：10-16Gy / 次數：4-8 次

治療技術：使用斜角對照配合強度調控放射治療技術，包含弧形及螺旋放射規劃，可考慮搭配影像導引治療，與心肺保護技術。可選擇先後給予全乳照射與追加照射，或是在治療計畫中同步規劃高低劑量區，同步進行兩部位照射

2. 修訂：《乳癌放射治療共識-1》**【胸壁放射治療】**

應以電腦斷層影像定義標靶體積與正常危急器官

適應症：侵襲癌經乳房全切除手術術後有較大的原發腫瘤 (T stage \geq T3)，

臨床或病理認定腫瘤侵犯淋巴結 (N stage \geq N1)

照射範圍：患側胸壁、手術疤痕與其周圍

照射劑量：50-50.4Gy / 次數：25-28 次

追加照射範圍：手術疤痕周圍

追加照射劑量：10-16Gy / 次數：4-8 次

治療技術：使用斜角對照配合強度調控放射治療技術，包含弧形及螺旋放射規劃，可考慮搭配影像導引治療，與心肺保護技術。可選擇先後給予胸壁照射與追加照射，或是在治療計畫中同步規劃高低劑量區，同步進行兩部位照射

111 年修訂版

3. 修訂：《乳癌放射治療共識-2》**【淋巴引流區放射治療】**

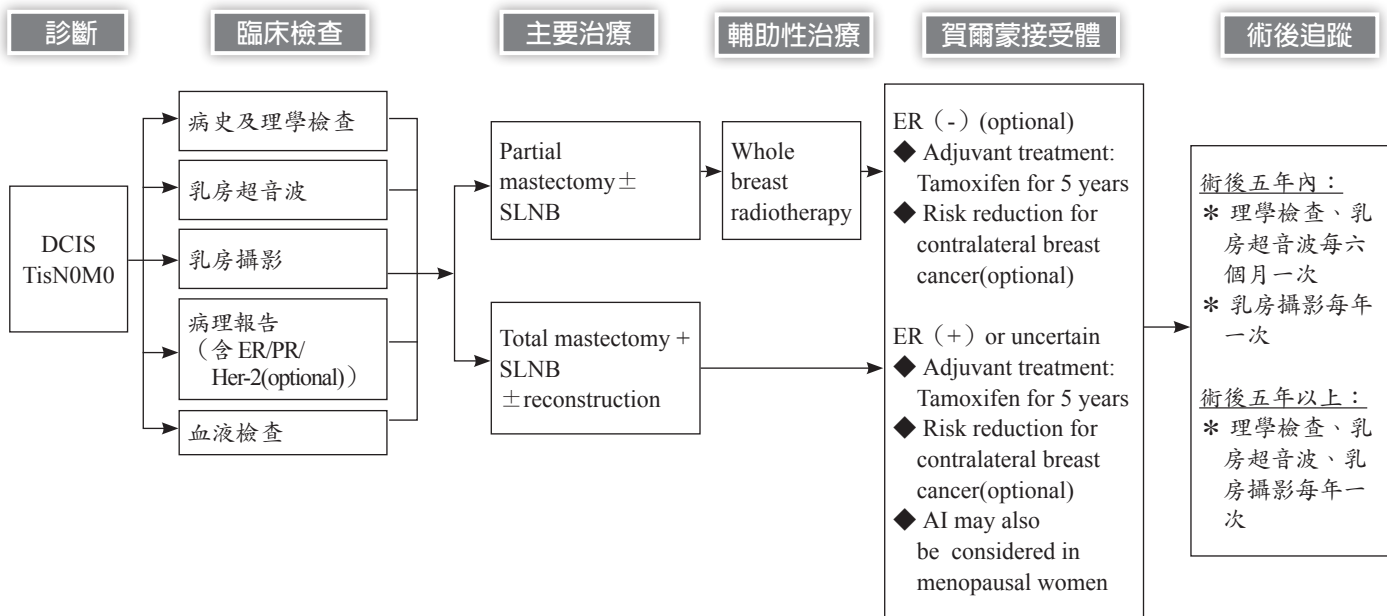
應以電腦斷層影像定義標靶體積與正常危急器官

適應症：較大的原發腫瘤 (T stage \geq T3)、臨床或病理認定腫瘤侵犯至少一個淋巴結 (N stage \geq N1)

照射範圍：患側高風險淋巴轉移範圍，包括腋下、鎖骨下、鎖骨上淋巴引流區。臨床懷疑內乳淋巴結轉移或正常組織容受許可時，可選擇性考慮照射內乳淋巴引流區。

照射劑量：50-50.4Gy / 次數：25-28 次

治療技術：使用強度調控放射治療技術，選擇性使用斜角對照，包含弧形及螺旋放射規劃，可考慮搭配影像導引治療，與心肺保護技術。

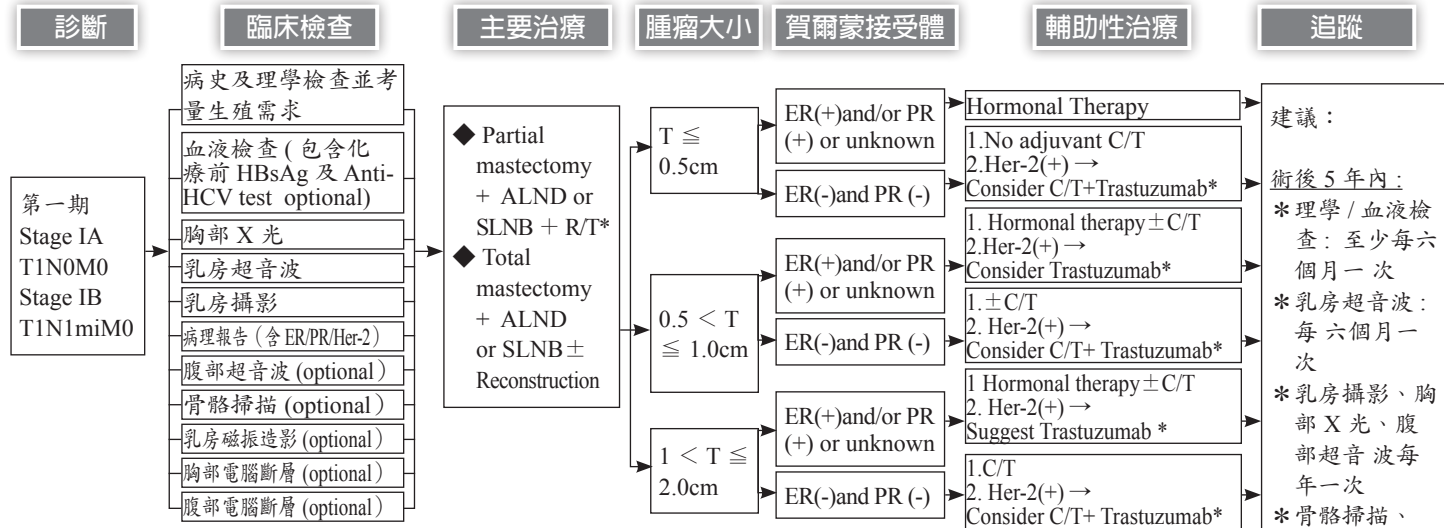


* 乳房保留手術後輔助性全乳放射治療可以顯著減少局部復發達 50%，若患者與乳癌醫療團隊經由醫病共同決策過程 (Shared decision making, SDM) 後同意該個案屬於低復發風險+，有些患者可以選擇只接受局部切除

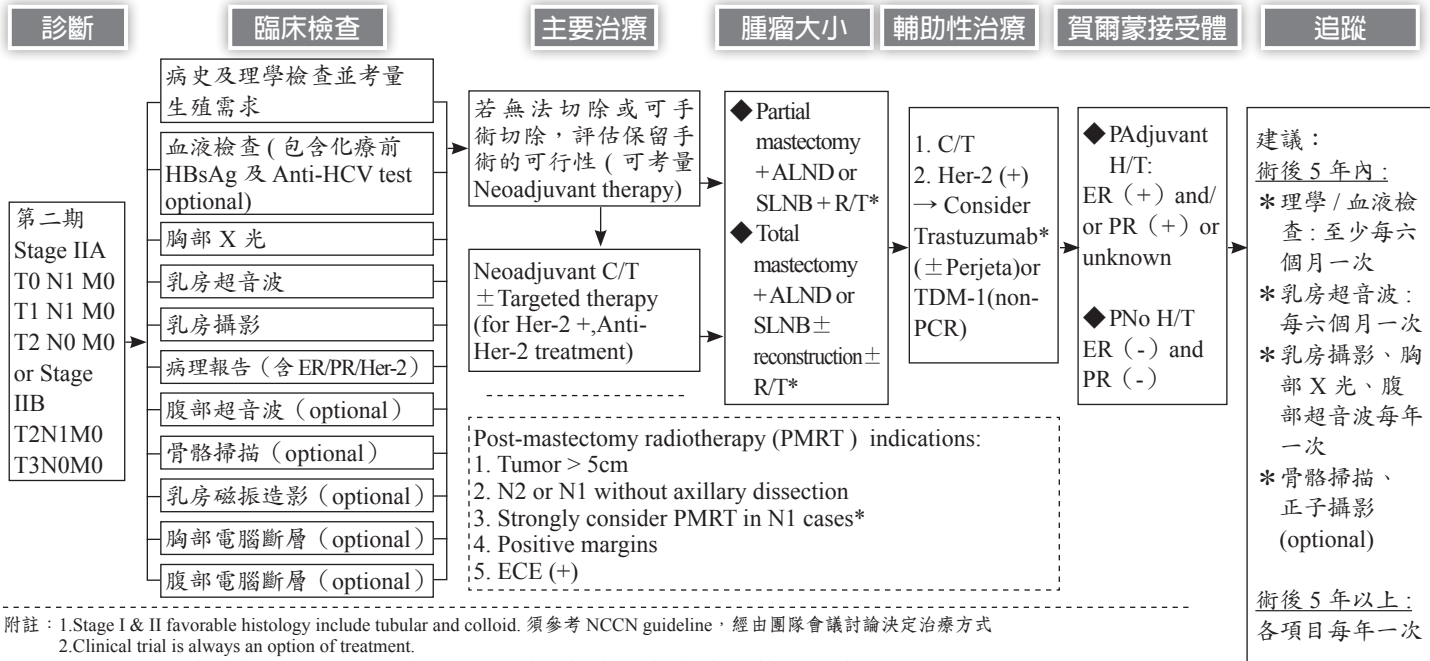
+ 局部復發的風險因子：可觸及的腫塊、較大的腫瘤、high grade、接近的腫瘤邊緣、年輕患者。

* tamoxifen 的標準劑量為 20 mg/day，持續 5 年。低劑量 * tamoxifen (5 mg/day，連續 3 年) 僅在患者服用 20 毫克劑量時出現症狀或患者不願意或不能服用標準劑量時才可選擇。

《 乳癌診療指引共識 -2 》



1. Stage I & II favorable histology include tubular and colloid. 須參考 NCCN guideline，經由團隊會議討論決定治療方式
2. Clinical trial is always an option of treatment.
3. Oncotype or Endopredict、ICT、Mammoprint、Pam50 test is optional examination for ambiguo patients.
4. * Trastuzumab 依健保使用規定或自費使用
5. 考慮接受化學治療或 Carrier 血液檢查 (需包含化療前 HBsAg 及 Anti-HCV test)
6. 輔助性放射治療技術以全乳照射為原則，細節請參閱乳癌放射治療共識。
7. 若患者符合所有以下條件 (1) ≥70 歲、(2) 接受乳房保留手術、(3) pT1N0、(4) ER+PR+ 且已接受荷爾蒙治療，經團隊會議討論後可選擇不接受輔助性放射治療。
8. 血液檢查 (包含化療前 HBsAg 及 Anti-HCV test optional)
9. Hormonal therapy: Tamoxifen 服用 5-10 年 ;AI 服用 5-10 年 .
10. 主要治療 Total mastectomy=Simple mastectomy



附註: 1. Stage I & II favorable histology include tubular and colloid. 須參考 NCCN guideline, 經由團隊會議討論決定治療方式

2. Clinical trial is always an option of treatment.

3. Oncotype or Endopredict、ICT、Mammoprint、Pam50 test is optional examination for ambiguous patients.

4. Anti-Her2 treatment 依健保使用規定或自費使用

5. 考慮接受化學治療或 Carrier 血液檢查 (需包含化療前 HBsAg 及 Anti-HCV test)

6. *N1 低復發風險患者經患者與醫療團隊醫病共同決策過程後, 全乳切除術後可免做輔助放療。低復發風險患者須滿足以下所有條件: 年齡 >=40 歲, T1, 單一淋巴結侵犯, 無淋巴血管侵犯, Her2/Neu (-)。

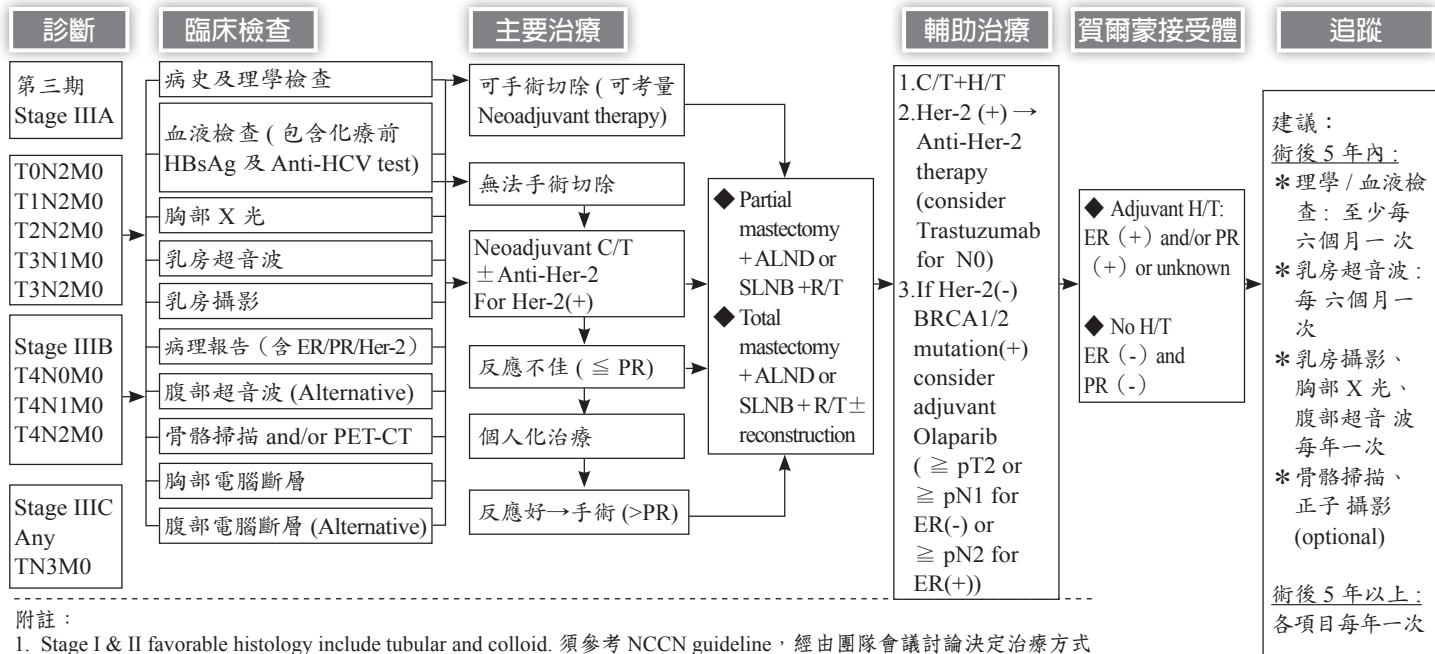
7. 血液檢查 (包含化療前 HBsAg 及 Anti-HCV test optional)

8. 主要治療 Total mastectomy=Simple mastectomy

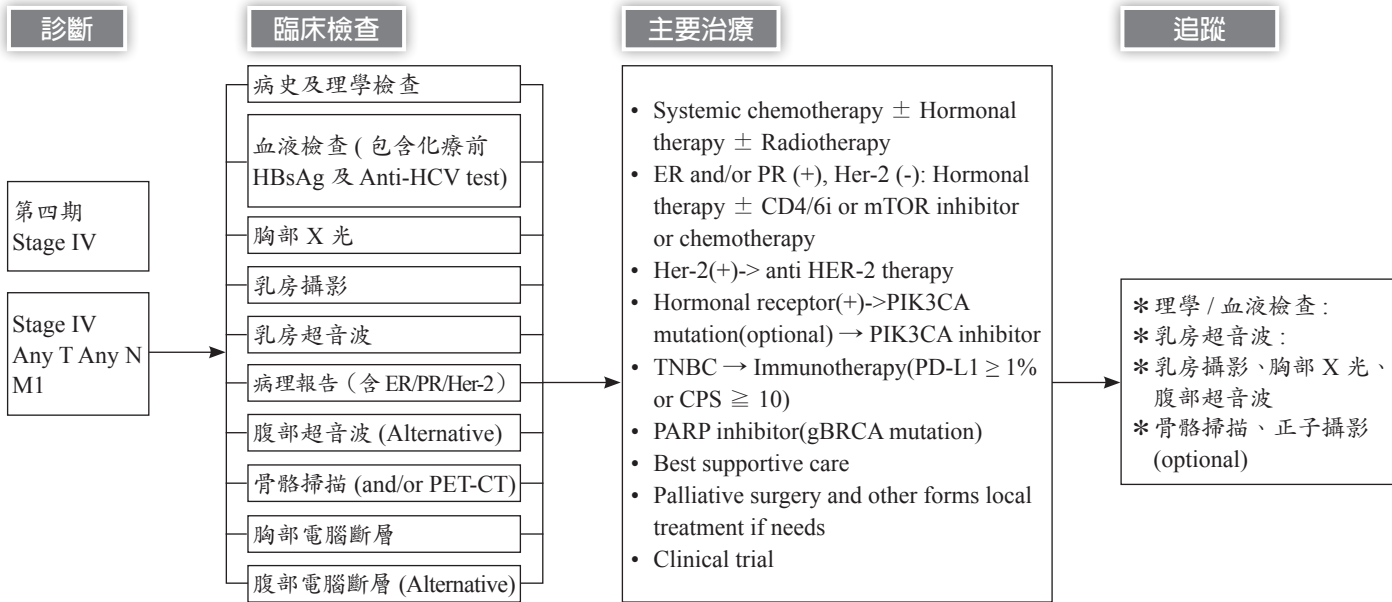
9. TNBC with residual invasive cancer following standard neoadjuvant therapy: Consider adjuvant capecitabine (自費使用)

10. ER (-), PR (-) and Her2 (+) Node (+) patients: Consider adjuvant chemotherapy + Trastuzumab ± Pertuzumab

《 乳癌診療指引共識 -4 》



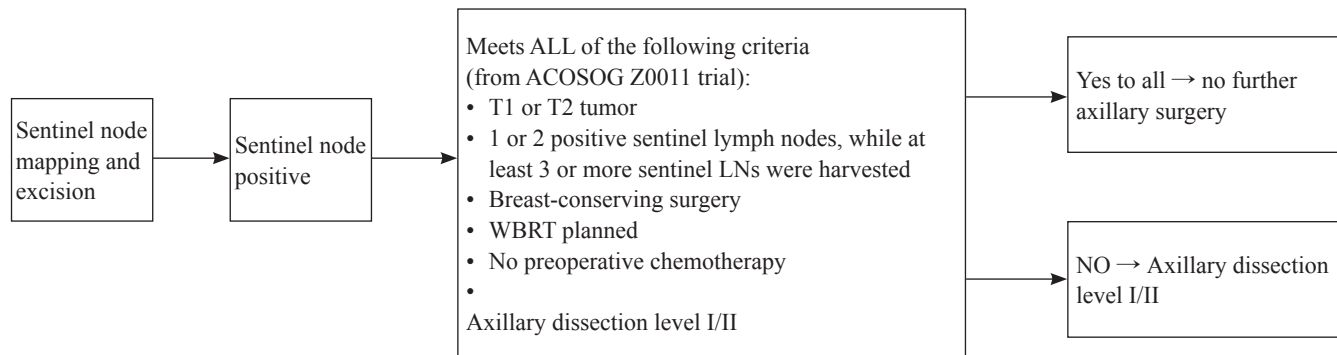
- 附註：
1. Stage I & II favorable histology include tubular and colloid. 須參考 NCCN guideline，經由團隊會議討論決定治療方式
 2. Clinical trial is always an option of treatment.
 3. RT 參閱乳癌放射治療共識
 4. Abdomen sono or abdomen CT Alternative
 5. 主要治療 Total mastectomy=Simple mastectomy
 6. TNBC with residual invasive cancer following standard neoadjuvant therapy: Consider adjuvant capecitabine (自費使用)
 7. 完全緩解 (Complete Response, CR), 部分緩解 (Partial Response, PR), 無變化 (No Change, NC; 疾病穩定, SD), 疾病進展 (Progressive Disease, PD)
 8. 針對 TNBC high risk 可以考慮 neoadjuvant 及 adjuvant immunotherapy



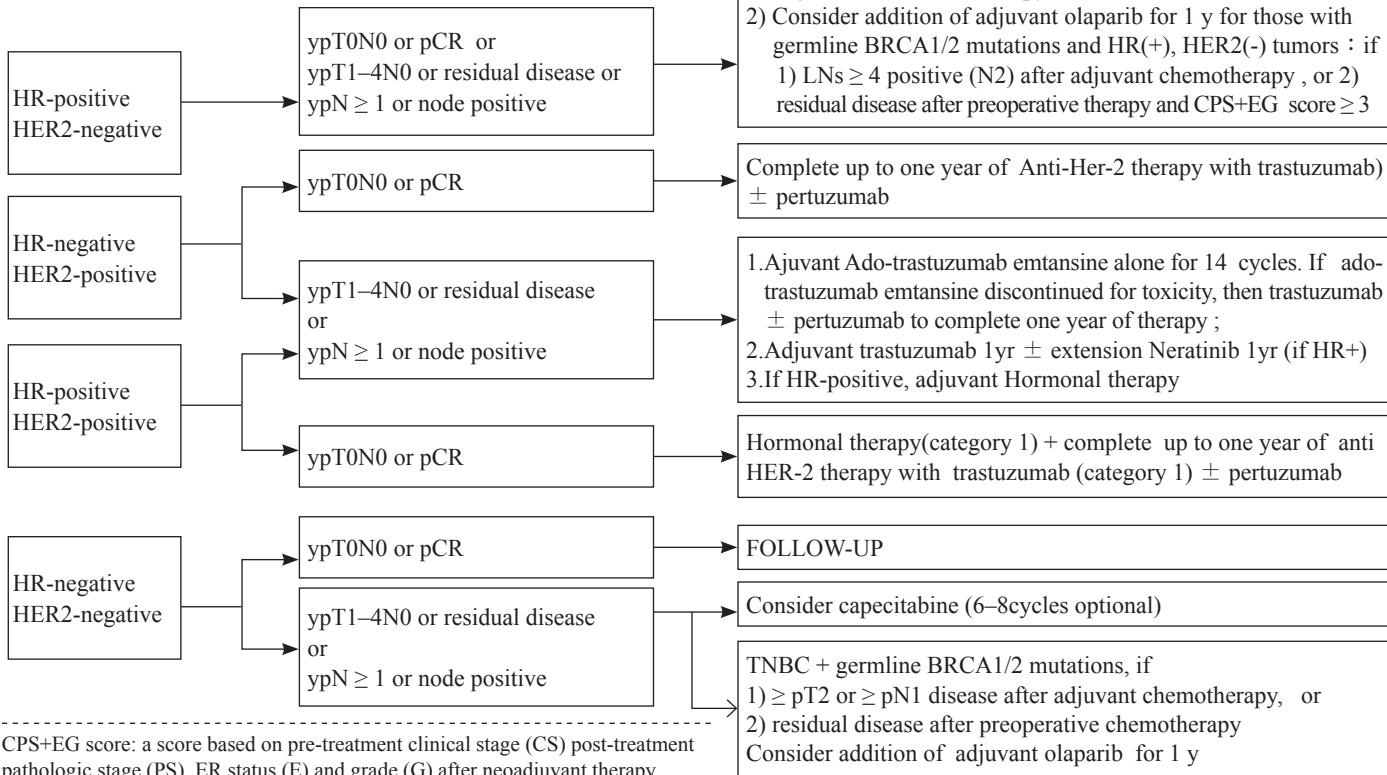
附註：

1. Stage I & II favorable histology include tubular and colloid. 須參考 NCCN guideline，經由團隊會議討論決定治療方式
2. Clinical trial is always an option of treatment.
3. Abdomen sono or abdomen CT Alternative
4. Anti -HER-2 therapy 依健保規範或自費使用
5. CPS: combined positive score

《 乳癌診療指引共識 -6 》



After complete course of neoadjuvant chemotherapy



CPS+EG score: a score based on pre-treatment clinical stage (CS) post-treatment pathologic stage (PS), ER status (E) and grade (G) after neoadjuvant therapy

《參考文獻》

1. NCCN Clinical Practice in Oncology: Breast Cancer V.3.2021
2. Jemal A, Siegel R, Xu J, Ward E. Cancer statistics, 2010. *CA Cancer J Clin* 2010;60:277-300.
3. Effects of chemotherapy and hormonal therapy for early breast cancer on recurrence and 15-year survival: an overview of the randomised trials. *Lancet* 2005;365:1687-1717.
4. Edge SB, Byrd DR, Compton CC, et al., eds. *AJCC Cancer Staging Manual*, 7th Edition. New York: Springer; 2010
5. Allred DC, Carlson RW, Berry DA, et al. NCCN Task Force Report: Estrogen Receptor and Progesterone Receptor Testing in Breast Cancer by Immunohistochemistry. *J Natl Compr Canc Netw* 2009;7 Suppl 6:1-1.
6. Dybdal N, Leiberman G, Anderson S, et al. Determination of HER2 gene amplification by fluorescence in situ hybridization and concordance with the clinical trials immunohistochemical assay in women with metastatic breast cancer evaluated for treatment with trastuzumab. *Breast Cancer Res Treat* 2005;93:3-11.
7. Chuba PJ, Hamre MR, Yap J, et al. Bilateral risk for subsequent breast cancer after lobular carcinoma-in-situ: analysis of surveillance, epidemiology, and end results data. *J Clin Oncol* 2005;23:5534-5541.
8. Anderson BO, Calhoun KE, Rosen EL. Evolving concepts in the management of lobular neoplasia. *J Natl Compr Canc Netw* 2006;4:511-522.
9. Fisher B, Costantino JP, Wickerham DL, et al. Tamoxifen for the prevention of breast cancer: current status of the National Surgical Adjuvant Breast and Bowel Project P-1 study. *J Natl Cancer Inst* 2005;97:1652-1662.
10. International Commission on Radiation Units and Measurements. ICRU Report No 62: Prescribing, Recording and Reporting Photon Beam Therapy (Supplement to ICRU Report 50). Bethesda, MD: ICRU Publications 1999.
11. Radiation therapy for the whole breast: Executive summary of an American Society for Radiation Oncology (ASTRO) evidence-based guideline, *Practical Radiation Oncology*, 2018; 8:145-152
12. Vargas C, Kestin L, Go N, et al. Factors associated with local recurrence and cause-specific survival in patients with ductal carcinoma in situ of the breast treated with breast-conserving therapy or mastectomy. *Int J Radiat Oncol Biol Phys* 2005;63:1514-1521.
13. McCormick B. Randomized Trial Evaluating Radiation following Surgical Excision for “Good Risk” DCIS: 12-Year Report from NRG/RTOG 9804. *Int J Radiat Oncol Biol Phys* 2018;102: P1603

《 乳癌抗癌藥物治療指引 》

Chemotherapy as Primary or Adjuvant Therapy (HER2-POSTIVE)

PREFERRED REGIMENS

AC followed by Paclitaxel with Trastuzumab

藥品名	劑量 mg/m ²	給藥日	頻率	週期	參考文獻
Doxorubicin	60	1	Q3W	4	1
Cyclophosphamide	600	1	Q3W	4	
Followed by					
Trastuzumab	4 → 2 mg/kg	1	QW	12	
Paclitaxel	80	1	QW	12	
Followed by					
Trastuzumab	2 (6) mg/kg	1	QW (Q3W)	40 (13)	

AC followed by Paclitaxel with Trastuzumab + Pertuzumab (optional)

藥品名	劑量 mg/m ²	給藥日	頻率	週期	參考文獻
Doxorubicin	60	1	Q3W	4	6
Cyclophosphamide	600	1	Q3W	4	
Followed by					
Trastuzumab	8 → 6 mg/kg	1	Q3W	17	
Pertuzumab*	840 → 420 mg	1	Q3W	17	
Paclitaxel	80	1, 8, 15	Q3W	4	

*Optional

Dose-dense AC followed by Paclitaxel with Trastuzumab

藥品名	劑量 mg/m ²	給藥日	頻率	週期	參考文獻
Doxorubicin	60	1	Q2W	4	2
Cyclophosphamide	600	1	Q2W	4	
Followed by					
Trastuzumab	4 → 2 mg/kg	1, 8	Q2W	4	
Paclitaxel	175	1	Q2W	4	
Followed by					
Trastuzumab	2 (6) mg/kg	1	QW (Q3W)	44 (14)	

TCH

藥品名	劑量 mg/m ²	給藥日	頻率	週期	參考文獻
Trastuzumab	4 → 2 mg/kg	1, 8, 15	Q3W	6	3
Docetaxel	75	1	Q3W	6	
Carboplatin	6 AUC	1	Q3W	6	
Followed by					
Trastuzumab	6 mg/kg	1	Q3W	11	

TCH + Pertuzumab (optional)

藥品名	劑量 mg/m ²	給藥日	頻率	週期	參考文獻
Trastuzumab	8 → 6 mg/kg	1	Q3W	17	4
Pertuzumab*	840 → 420 mg	1	Q3W	17	
Docetaxel	75	1	Q3W	6	
Carboplatin	6 AUC	1	Q3W	6	

*Optional

Trastuzumab + Pertuzumab

藥品名	劑量 mg/m ²	給藥日	頻率	週期	參考文獻
Trastuzumab	8 → 6 mg/kg	1	Q3W	17	7
Pertuzumab*	840 → 420 mg	1	Q3W	17	

*Optional

Trastuzumab + Pertuzumab + Neratinib

藥品名	劑量 mg/m ²	給藥日	頻率	週期	參考文獻
Trastuzumab	8 → 6 mg/kg	1	Q3W	17	7
Pertuzumab*	840 → 420 mg	1	Q3W	17	
Followed by Neratinib*	240 mg PO QD			1 year	8

*Optional

T-DM1

藥品名	劑量 mg/m ²	給藥日	頻率	週期	參考文獻
T-DM1	3.6 mg/kg	1	Q3W	14	7

OTHER REGIMENS**AC followed by Docetaxel with Trastuzumab**

藥品名	劑量 mg/m ²	給藥日	頻率	週期	參考文獻
Doxorubicin	60	1	Q3W	4	3
Cyclophosphamide	600	1	Q3W	4	
Followed by					
Trastuzumab	4 → 2 mg/kg	1, 8, 15	Q3W	4	
Docetaxel	80-100	1	Q3W	4	
Followed by					
Trastuzumab	6 mg/kg	1	Q3W	13	

AC followed by Docetaxel with Trastuzumab + Pertuzumab

藥品名	劑量 mg/m ²	給藥日	頻率	週期	參考文獻
Doxorubicin	60	1	Q3W	4	3
Cyclophosphamide	600	1	Q3W	4	
Followed by					
Trastuzumab	8 → 6 mg/kg	1	Q3W	17	
Pertuzumab*	840 → 420 mg	1	Q3W	17	
Docetaxel	80-100	1	Q3W	4	

*Optional

Paclitaxel + Trastuzumab (APT trial)

藥品名	劑量 mg/m ²	給藥日	頻率	週期	參考文獻
Trastuzumab	4 → 2 mg/kg	1	QW	12	5
Paclitaxel	80	1	QW	12	
Followed by Trastuzumab	2 (6) mg/kg	1	QW (Q3W)	40 (13)	

TC + Trastuzumab

藥品名	劑量 mg/m ²	給藥日	頻率	週期	參考文獻
Trastuzumab	4 → 2 (8 → 6) mg/kg	1, 8, 15 (1)	Q3W	4	6
Docetaxel	75	1	Q3W	4	
Cyclophosphamide	600	1	Q3W	4	
Followed by Trastuzumab	6 mg/kg	1	Q3W	13	

參考文獻

1. Romond EH, Perez EZ, Bryant J, et al. Trastuzumab plus adjuvant chemotherapy for operable HER2 positive breast cancer. N Engl J Med 2005;353:1673-1684.
2. Dang C, Fomier M, Sugarman S, et al. The safety of dose-dense doxorubicin and cyclophosphamide followed by paclitaxel with trastuzumab in HER2/neu over expressed/amplified breast cancer. J Clin Oncol. 2008;26(8):1216-1222.
3. Slamon D, Eiermann W, Robert N, et al. Adjuvant trastuzumab in HER2-positive breast cancer. N Engl J Med 2011;365:1273-1283.

4. Schneeweiss A, Chia S, Hickish T et al. Pertuzumab plus trastuzumab in combination with standard neoadjuvant anthracycline-containing and anthracycline-free chemotherapy regimens in patients with HER2-positive early breast cancer: a randomized phase II cardiac safety study (TRYPHAENA). *Ann Oncol* 2013; 24: 2278-2284.
5. Tolaney S, Barry W, Dang C, et al. Adjuvant paclitaxel and trastuzumab for node-negative HER2-positive breast cancer. *N Engl J Med* 2015;372:134-141.
6. Jones SE, Collea R, Paul D, et al. Adjuvant docetaxel and cyclophosphamide plus trastuzumab in patients with HER2-amplified early stage breast cancer: a singlegroup, open-label, phase 2 study. *Lancet Oncol* 2013;14:1121-8.
7. Minckwitz G, Huang C, Mano M, et al. Trastuzumab emtansine for residual invasive HER2-positive breast cancer. *N Engl J Med* 2019;380:617-628.
8. Miguel Martin, Frankie A Holmes, Bent Ejlersen, et al. Neratinib after trastuzumab-based adjuvant therapy in HER2-positive breast cancer (ExteNET): 5-year analysis of a randomised, double-blind, placebo-controlled, phase 3 trial. *Lancet Oncol* 2017;18: 1688–700.

Chemotherapy as Primary or Adjuvant Therapy (HER2-NEGATIVE)

PREFERRED REGIMENS

Dose-dense AC followed by Paclitaxel

藥品名*	劑量 mg/m ²	給藥日	頻率	週期	參考文獻
Doxorubicin	60	1	Q2W	4	1
Cyclophosphamide	600	1	Q2W	4	
Followed by Paclitaxel	175	1	Q2W	4	

Dose-dense AC followed by weekly Paclitaxel

藥品名	劑量 mg/m ²	給藥日	頻率	週期	參考文獻
Doxorubicin	60	1	Q2W	4	1
Cyclophosphamide	600	1	Q2W	4	
Followed by Paclitaxel	80	1	QW	12	

TC

藥品名	劑量 mg/m ²	給藥日	頻率	週期	參考文獻
Docetaxel	75	1	Q3W	4	2
Cyclophosphamide	600	1	Q3W	4	

藥品名	劑量 mg/m ²	給藥日	頻率	週期	參考文獻
Capecitabine	1000-1250 PO BID	1-14	Q3W	6-8	18

(If triple-negative breast cancer and residual disease after preoperative therapy with taxane, alkylator, and anthracycline based chemotherapy)

For germline BRCA1/2 mutations

藥品名	劑量 mg/m ²	給藥日	頻率	週期	參考文獻
Olaparib	300 mg PO BID		Q4W	For 1 year	23

For High-risk triple-negative breast cancer (TNBC)

藥品名	劑量 mg/m ²	給藥日	頻率	週期	參考文獻
Pembrolizumab	200 mg	1	Q3W	4	22
Paclitaxel	80	1, 8, 15	Q3W	4	
Carboplatin	AUC 5	1	Q3W	4	
Followed by					
Pembrolizumab	200 mg	1	Q3W	4	
Doxorubicin*	60*	1	Q3W	4	
Cyclophosphamide	600	1	Q3W	4	
Followed by					
Pembrolizumab	200 mg	1	Q3W	9	

*Epirubicin 90 mg/m²

Useful in certain circumstances

Dose-dense AC

藥品名	劑量 mg/m ²	給藥日	頻率	週期	參考文獻
Doxorubicin	60	1	Q2W	4	1
Cyclophosphamide	600	1	Q2W	4	

AC

藥品名	劑量 mg/m ²	給藥日	頻率	週期	參考文獻
Doxorubicin	60	1	Q3W	4	3
Cyclophosphamide	600	1	Q3W	4	

TAC

藥品名	劑量 mg/m ²	給藥日	頻率	週期	參考文獻
Docetaxel	75	1	Q3W	6	4
Doxorubicin	60	1	Q3W	6	
Cyclophosphamide	500	1	Q3W	6	

TEC

藥品名	劑量 mg/m ²	給藥日	頻率	週期	參考文獻
Docetaxel	75	1	Q3W	6	14
Epirubicin	75	1	Q3W	6	
Cyclophosphamide	500	1	Q3W	6	

FAC

藥品名	劑量 mg/m ²	給藥日	頻率	週期	參考文獻
5-FU	500	1, 8 or 1, 4	Q3W	6	5, 6
Doxorubicin	50	1	Q3W	6	
Cyclophosphamide	500	1	Q3W	6	

CEF

藥品名	劑量 mg/m ²	給藥日	頻率	週期	參考文獻
Cyclophosphamide	500	1, 8	Q3W	6	7
Epirubicin	80	1, 8	Q3W	6	
5-FU	500	1, 8	Q3W	6	

CMF

藥品名*	劑量 mg/m ²	給藥日	頻率	週期	參考文獻
Cyclophosphamide	100 PO	1-14	Q4W	6	8
Methotrexate	40	1, 8	Q4W	6	
5-FU	600	1, 8	Q4W	6	

AC followed by Docetaxel

藥品名	劑量 mg/m ²	給藥日	頻率	週期	參考文獻
Doxorubicin	60	1	Q3W	4	9
Cyclophosphamide	600	1	Q3W	4	
Followed by Docetaxel	80-100	1	Q3W	4	

AC followed by Paclitaxel

藥品名	劑量 mg/m ²	給藥日	頻率	週期	參考文獻
Doxorubicin	60	1	Q3W	4	10
Cyclophosphamide	600	1	Q3W	4	
Followed by					
Paclitaxel	175	1	Q3W	4	

AC followed by weekly Paclitaxel

藥品名	劑量 mg/m ²	給藥日	頻率	週期	參考文獻
Doxorubicin	60	1	Q3W	4	10
Cyclophosphamide	600	1	Q3W	4	
Followed by					
Paclitaxel	80	1	QW	4	

EC

藥品名	劑量 mg/m ²	給藥日	頻率	週期	參考文獻
Epirubicin	90-100	1	Q3W	4	11
Cyclophosphamide	600	1	Q3W	4	

FEC followed by Docetaxel

藥品名	劑量 mg/m ²	給藥日	頻率	週期	參考文獻
5-FU	500	1	Q3W	3	12
Epirubicin	100	1	Q3W	3	
Cyclophosphamide	500	1	Q3W	3	
Followed by					
Docetaxel	100	1	Q3W	3	

FEC followed by weekly Paclitaxel

藥品名	劑量 mg/m ²	給藥日	頻率	週期	參考文獻
5-FU	600	1	Q3W	4	13
Epirubicin	90	1	Q3W	4	
Cyclophosphamide	600	1	Q3W	4	
Followed by					
3 Weeks no treatment					
Followed by					
Paclitaxel	100	1	QW	8	

FLC

藥品名	劑量 mg/m ²	給藥日	頻率	週期	參考文獻
5-FU	500	1	Q3W	6	17
Lipo-Doxorubicin	35-40	1	Q3W	6	
Cyclophosphamide	500	1	Q3W	6	

Cisplatin + Docetaxel (Triple negative)

藥品名*	劑量 mg/m ²	給藥日	頻率	週期	參考文獻
Cisplatin	60	1			15, 16
Docetaxel	60	1			

Carboplatin + Docetaxel (Triple negative)

藥品名	劑量 mg/m ²	給藥日	頻率	週期	參考文獻
Cisplatin	AUC 6	1	Q3W		19, 20
Docetaxel	75	1	Q3W		

Weekly Paclitaxel + Carboplatin

藥品名	劑量 mg/m ²	給藥日	頻率	週期	參考文獻
Paclitaxel	80	1, 8, 15	Q3W	4	21
Carboplatin	AUC 6	1	Q3W	4	

*三院有個別版本

參考文獻

1. Citron ML, Berry DA, et al. Randomized Trial of Dose-Dense Versus Conventionally Scheduled and Sequential Versus Concurrent Combination Chemotherapy as Postoperative Adjuvant Treatment of Node-Positive Primary Breast Cancer: First Report of Intergroup Trial C9741/Cancer and Leukemia Group B Trial 9741. J Clin Oncol 2003;21:1431-1439.
2. Jones S, Holmes F, O'Shaughnessey J, et al. Docetaxel With Cyclophosphamide Is Associated With an Overall Survival Benefit

- Compared With Doxorubicin and Cyclophosphamide: 7-Year Follow-Up of US Oncology Research Trial 9735. *J Clin Oncol* 2009;27:1177-1183.
3. Fisher B, Brown AM, Dimitrov NV, et al. Two months of doxorubicin-cyclophosphamide with and without interval reinduction therapy compared with 6 months of cyclophosphamide, methotrexate, and fluorouracil in positive-node breast cancer patients with tamoxifen-nonresponsive tumors: results from the National Surgical Adjuvant Breast and Bowel Project B-15. *J Clin Oncol* 1990;8:1483-1496.
 4. Martin, Pienknowski T, Mackey L, et al. Adjuvant docetaxel for node-positive breast cancer. *N Engl J Med* 2005;352:22.
 5. Buzdar AU, Kau SW, Smith TL, Hortobagyi GN. Ten-year results of. FAC adjuvant chemotherapy trial in breast cancer. *Am J Clin Oncol.* 1989;12:123-128.
 6. Assikis V, Buzdar A, Yang Y, et al. A Phase III Trial of Sequential Adjuvant Chemotherapy for Operable Breast Carcinoma. Final Analysis with 10-Year Follow-Up. *Cancer* 2003;97:2716-23.
 7. Levine MN, Bramwell VH, Pritchard KI, et al. Randomized trial of intensive cyclophosphamide, epirubicin, and fluorouracil chemotherapy compared with cyclophosphamide, methotrexate, and fluorouracil in premenopausal women with node-positive breast cancer. National Cancer Institute of Canada Clinical Trials Group. *J Clin Oncol* 1998;16:2651-8.
 8. Bonadonna G, Brusamolino E, Valagussa P, et al. Combination chemotherapy as an adjuvant treatment in operable breast cancer. *N Engl J Med.* 1976;294(8):405-410.
 9. von Minckwitz G1, Raab G, Caputo A, et al. Doxorubicin with cyclophosphamide followed by docetaxel every 21 days compared with doxorubicin and docetaxel every 14 days as preoperative treatment in operable breast cancer: the GEPARDUO study of the German Breast Group. *J Clin Oncol* 2005;23(12):2676-85.
 10. Sparano JA, Wang M, Martino S, et al. Weekly Paclitaxel in the Adjuvant Treatment of Breast Cancer. *N Engl J Med* 2008;258:1663-1671.
 11. Piccart MJ, Di Leo A, Beauduin M, et al. Phase III Trial Comparing Two Dose Levels of Epirubicin Combined With Cyclophosphamide With Cyclophosphamide, Methotrexate, and Fluorouracil in Node-Positive Breast Cancer. *J Clin Oncol* 2001;19:3103-3110.
 12. Roche H, Fumoleau P, Spielmann M, et al. Sequential adjuvant epirubicin-based and docetaxel chemotherapy for node-positive breast cancer patients: the FNCLCC PACS 01 Trial. *J Clin Oncol* 2006; 24:5664-5671.

13. Martin M, Rodriguez-Lescure A, Ruiz A, et al. Randomized phase 3 trial of fluorouracil, epirubicin, and cyclophosphamide alone or followed by paclitaxel for early breast cancer. *J Natl Cancer Inst* 2008;100:805-814.
14. Bayo J, Prieto B, Rivera F. Comparison of Doctors' and Breast Cancer Patients' Perceptions of Docetaxel, Epirubicin, and Cyclophosphamide (TEC) Toxicity. *Breast J* 2016; 22: 293–302.
15. Y. Fan, B. H. Xu*, P. Yuan, F. Ma, et al. Docetaxel–cisplatin might be superior to docetaxel–capecitabine in the first-line treatment of metastatic triple-negative breast cancer. *Annals of Oncology* 24: 1219–1225, 2013.
16. Park SH, et al. Docetaxel plus cisplatin is effective for patients with metastatic breast cancer resistant to previous anthracycline treatment: a phase II clinical trial. *BMC Cancer*. 2005; 5: 21.
17. Rau KM, Lin YC, Chen YY, et al. Pegylated liposomal doxorubicin (Lipo-Dox®) combined with cyclophosphamide and 5-fluorouracil is effective and safe as salvage chemotherapy in taxane-treated metastatic breast cancer: an open-label, multi-center, non-comparative phase II study. *BMC Cancer*. 2015; 15: 423.
18. Masuda N, Lee SJ, Ohtani S, et al. Adjuvant capecitabine for breast cancer after preoperative chemotherapy. *N Engl J Med* 2017;376:2147-2159.
19. Sharma P, López-Tarruella S, García-Saenz JA, et al. Pathological Response and Survival in Triple-Negative Breast Cancer Following Neoadjuvant Carboplatin plus Docetaxel. *Clin Cancer Res* December 1 2018 (24) (23) 5820-5829.
20. Perez EA, Suman VJ, Fitch TR, et al. A Phase II Trial of Docetaxel and Carboplatin as First-Line Chemotherapy for Metastatic Breast Cancer: NCCTG Study N9932. *Oncology* 2005;69:117–121.
21. Loibl S, O'Shaughnessy J, et al. Addition of the PARP inhibitor veliparib plus carboplatin or carboplatin alone to standard neoadjuvant chemotherapy in triple-negative breast cancer (BrighTNess): a randomised, phase 3 trial. *Lancet Oncol* 2018; 19: 497–509.
22. Schmid P, Cortes J, Pusztai L, et al. Pembrolizumab for early triple-negative breast cancer. *N Engl J Med*, 2020;382(9):810-821.
23. Tutt ANJ, Garber JE, Kaufman B, et al. Adjuvant Olaparib for Patients with BRCA1- or BRCA2-Mutated Breast Cancer. *N Engl J Med*. 2021 Jun 3.

Adjuvant Endocrine Therapy

Anti-estrogen

藥品名	劑量 mg/m ²	給藥日	頻率	週期	參考文獻
Tamoxifen	20-40 mg PO QD				1

Aromatase inhibitor

藥品名	劑量 mg/m ²	給藥日	頻率	週期	參考文獻
Exemestane	25 mg PO QD				2

藥品名	劑量 mg/m ²	給藥日	頻率	週期	參考文獻
Anastrozole	1 mg PO QD				3

藥品名	劑量 mg/m ²	給藥日	頻率	週期	參考文獻
Letrozole	2.5 mg PO QD				4

Ovarian suppression or ablation

藥品名	劑量 mg/m ²	給藥日	頻率	週期	參考文獻
Goserelin Acetate	3.6 mg SC	1	Q4W		5

藥品名	劑量 mg/m ²	給藥日	頻率	週期	參考文獻
Leuprolide Acetate	3.75 mg SC	1	Q4W		6

參考文獻

1. Product Information: tamoxifen citrate oral tablets, tamoxifen citrate oral tablets. Watson Laboratories (per manufacturer), Corona, CA, 2011.
2. Product Information: AROMASIN(R) oral tablets, exemestane oral tablets. Pharmacia & Upjohn Company (per FDA), New York, NY, 2013.
3. Product Information: ARIMIDEX(R) oral tablet, anastrozole oral tablet. AstraZeneca Pharmaceuticals LP, Wilmington, DE, 2009.
4. Product Information: Femara oral tablets, letrozole oral tablets. Novartis Pharmaceuticals Corporation, East Hanover, NJ, 2010.
5. Product Information: ZOLADEX(R) implant 3.6mg, goserelin acetate implant implant 3.6mg. AstraZeneca, Wilmington, DE, 2009.
6. Boccardo F, Rubagotti A, Amoroso D, et al: Endocrinological and clinical evaluation of two depot formulations of leuprolide acetate in pre- and perimenopausal breast cancer patients. Cancer Chemother Pharmacol 1999; 43:461-466

Chemotherapy for Recurrent or Metastatic Breast Cancer

HER2-NEGATIVE

PREFERRED SINGLE AGENTS

Anthracyclins

藥品名	劑量 mg/m ²	給藥日	頻率	週期	參考文獻
Doxorubicin	60-75	1	Q3W	7	1

藥品名	劑量 mg/m ²	給藥日	頻率	週期	參考文獻
Doxorubicin	20	1	QW		2

藥品名	劑量 mg/m ²	給藥日	頻率	週期	參考文獻
Lipo-Doxorubicin	50	1	Q4W		3

Taxanes

藥品名	劑量 mg/m ²	給藥日	頻率	週期	參考文獻
Paclitaxel	175	1	Q3W		4

藥品名	劑量 mg/m ²	給藥日	頻率	週期	參考文獻
Paclitaxel	80	1	QW		5

Antimetabolites

藥品名	劑量 mg/m ²	給藥日	頻率	週期	參考文獻
Capecitabine	1000-1250 PO BID	1-14	Q3W	6	6

藥品名	劑量 mg/m ²	給藥日	頻率	週期	參考文獻
Gemcitabine	800-1200	1, 8, 15	Q4W		7

Other microtubule inhibitors

藥品名	劑量 mg/m ²	給藥日	頻率	週期	參考文獻
Vinorelbine	25	1	QW		8

藥品名	劑量 mg/m ²	給藥日	頻率	週期	參考文獻
Eribulin	1.4	1, 8	Q3W		9

PARP inhibitors

藥品名	劑量 mg/m ²	給藥日	頻率	週期	參考文獻
Olaparib	300 mg PO BID				46

藥品名	劑量 mg/m ²	給藥日	頻率	週期	參考文獻
Talazoparib	1 mg PO QD		Q4W		47

Atezolizumab + albumin-bound paclitaxel

藥品名	劑量 mg/m ²	給藥日	頻率	週期	參考文獻
Atezolizumab	840 mg	1, 15	Q4W		48
Nab-Paclitaxel	100	1, 8, 15	Q4W		

(An option for patients with PD-L1-positive TNBC)

藥品名	劑量 mg/m ²	給藥日	頻率	週期	參考文獻
Pembrolizumab	200 mg	1	Q3W		55

chemotherapy (albumin-bound paclitaxel, paclitaxel, or gemcitabine and carboplatin)

TNBC, CPS ≥ 10

藥品名	劑量 mg/m ²	給藥日	頻率	週期	參考文獻
Carboplatin	AUC 6	1	Q3W-Q4W		11

(An option for patients with triple-negative tumors and germline BRCA1/2 mutation)

藥品名	劑量 mg/m ²	給藥日	頻率	週期	參考文獻
Cisplatin	75	1	Q3W	4	17

(An option for patients with triple-negative tumors and germline BRCA1/2 mutation)

OTHER SINGLE AGENTS

藥品名	劑量 mg/m ²	給藥日	頻率	週期	參考文獻
Cyclophosphamide	50 PO QD	1-21	Q4W		10

藥品名	劑量 mg/m ²	給藥日	頻率	週期	參考文獻
Docetaxel	60-100	1	Q3W	6	12, 13

藥品名	劑量 mg/m ²	給藥日	頻率	週期	參考文獻
Docetaxel	35	1, 8, 15, 22, 29, 36	Q8W		14

藥品名	劑量 mg/m ²	給藥日	頻率	週期	參考文獻
Nab-Paclitaxel	100 or 150	1, 8, 15	Q4W		15, 16

藥品名	劑量 mg/m ²	給藥日	頻率	週期	參考文獻
Nab-Paclitaxel	260	1	Q3W		15

藥品名	劑量 mg/m ²	給藥日	頻率	週期	參考文獻
Epirubicin	75	1	Q3W		18

藥品名 [*]	劑量 mg/m ²	給藥日	頻率	週期	參考文獻
Larotrectinib	100 mg BID PO				56

藥品名 [*]	劑量 mg/m ²	給藥日	頻率	週期	參考文獻
Entrectinib	600 mg QD PO				57

藥品名*	劑量 mg/m ²	給藥日	頻率	週期	參考文獻
Pembrolizumab	200 mg	1	Q3W		58, 59

MSI-H/dMMR and TMB-H (≥ 10 muts/mb)

COMBINATIONS

Carboplatin + Docetaxel (triple negative)

藥品名*	劑量 mg/m ²	給藥日	頻率	週期	參考文獻
Carboplatin	AUC 6	1	Q3W	6	49, 50
Docetaxel	75	1	Q3W	6	

Paclitaxel+Carboplatin (Triple negative)

藥品名	劑量 mg/m ²	給藥日	頻率	週期	參考文獻
Paclitaxel	175-200	1	Q3W		51
Carboplatin	AUC 6	1	Q3W		

Paclitaxel+Carboplatin (weekly)(Triple negative)

藥品名	劑量 mg/m ²	給藥日	頻率	週期	參考文獻
Paclitaxel	100	1, 8, 15	Q3W		52
Carboplatin	AUC 2	1, 8, 15	Q3W		

Albumin-bound Paclitaxel + Carboplatin (weekly) (Triple negative, preoperative setting)

藥品名*	劑量 mg/m ²	給藥日	頻率	週期	參考文獻
Nab-Paclitaxel	125	1, 8	Q3W		53
Carboplatin	AUC 2	1, 8	Q3W		

CAF

藥品名 *	劑量 mg/m ²	給藥日	頻率	週期	參考文獻
Cyclophosphamide	100 PO	1-14	Q4W		19
Doxorubicin	30	1, 8	Q4W		
5-FU	500	1, 8	Q4W		

FAC

藥品名 *	劑量 mg/m ²	給藥日	頻率	週期	參考文獻
5-FU	500	1, 8 or 1, 4	Q3W		20
Doxorubicin	50	1	Q3W		
Cyclophosphamide	500	1	Q3W		

FEC

藥品名	劑量 mg/m ²	給藥日	頻率	週期	參考文獻
Cyclophosphamide	400	1, 8	Q4W	6-9	21
Epirubicin	50	1, 8	Q4W		
5-FU	500	1, 8	Q4W		

AC

藥品名	劑量 mg/m ²	給藥日	頻率	週期	參考文獻
Doxorubicin	60	1	Q3W	8	22
Cyclophosphamide	600	1	Q3W	8	

EC

藥品名	劑量 mg/m ²	給藥日	頻率	週期	參考文獻
Epirubicin	75	1	Q3W	6	23
Cyclophosphamide	600	1	Q3W	6	

CMF

藥品名 *	劑量 mg/m ²	給藥日	頻率	週期	參考文獻
Cyclophosphamide	100 PO QD	1-14	Q4W		24, 45
Methotrexate	40	1, 8	Q4W		
5-FU	600	1, 8	Q4W		

Docetaxel + Capecitabine

藥品名	劑量 mg/m ²	給藥日	頻率	週期	參考文獻
Docetaxel	75	1	Q3W	6	25
Capecitabine	950 PO BID	1-14	Q3W	6	

GT

藥品名	劑量 mg/m ²	給藥日	頻率	週期	參考文獻
Paclitaxel	175	1	Q3W		26
Gemcitabine	1250	1, 8	Q3W		

藥品名	劑量 mg/m ²	給藥日	頻率	週期	參考文獻
Paclitaxel	80	1, 8, 15	Q4W		44
Gemcitabine	800	1, 8, 15	Q4W		

Gemcitabine + Carboplatin

藥品名	劑量 mg/m ²	給藥日	頻率	週期	參考文獻
Gemcitabine	1250	1, 8	Q3W		27
Carboplatin	AUC 2	1, 8	Q3W		

Bevacizumab + Paclitaxel

藥品名	劑量 mg/m ²	給藥日	頻率	週期	參考文獻
Bevacizumab	10 mg/kg	1, 8	Q4W		28
Paclitaxel	90	1, 8, 15	Q4W		

HER2-POSITIVE

PREFERRED AGENTS

藥品名	劑量 mg/m ²	給藥日	頻率	週期	參考文獻
Pertuzumab	840 → 420 mg	1	Q3W		29
Trastuzumab	8 → 6 mg/kg	1	Q3W		
Docetaxel	75-100	1	Q3W		

藥品名	劑量 mg/m ²	給藥日	頻率	週期	參考文獻
Pertuzumab	840 → 420 mg	1	Q3W		30, 31
Trastuzumab	8 → 6 (4 → 2) mg/kg	1	Q3W (QW)		
Paclitaxel	175 (80)	1	Q3W (QW)		

OTHER AGENTS

藥品名	劑量 mg/m ²	給藥日	頻率	週期	參考文獻
Trastuzumab	8 → 6 (4 → 2) mg/kg	1	Q3W (QW)		31, 32
Paclitaxel	175	1	Q3W		
Carboplatin	AUC 6	1	Q3W		

藥品名	劑量 mg/m ²	給藥日	頻率	週期	參考文獻
Trastuzumab	8 → 6 (4 → 2) mg/kg	1	Q3W (QW)		31, 33, 34
Paclitaxel	175 (80-90)	1	Q3W (QW)		

藥品名	劑量 mg/m ²	給藥日	頻率	週期	參考文獻
Trastuzumab	8 → 6 (4 → 2) mg/kg	1	Q3W (QW)		31, 35, 36
Docetaxel	80-100 (35)	1, 8, 15 (1)	Q3W (QW)		

藥品名	劑量 mg/m ²	給藥日	頻率	週期	參考文獻
Trastuzumab	8 → 6 (4 → 2) mg/kg	1	Q3W (QW)		31, 37
Vinorelbine	30-35 (25)	1, 8 (1)	Q3W (QW)		

藥品名	劑量 mg/m ²	給藥日	頻率	週期	參考文獻
Trastuzumab	8 → 6 (4 → 2) mg/kg	1	Q3W (QW)		31, 33, 38, 39
Capecitabine	1000-1250	1-14	Q3W		

藥品名	劑量 mg/m ²	給藥日	頻率	週期	參考文獻
T-DM1	3.6 mg/kg	1	Q3W		40

藥品名	劑量 mg/m ²	給藥日	頻率	週期	參考文獻
Lapatinib	1250 mg PO QD	1-21	Q3W		41
Capecitabine	1000 PO BID	1-14	Q3W		

藥品名	劑量 mg/m ²	給藥日	頻率	週期	參考文獻
Trastuzumab	8 → 6 (4 → 2) mg/kg	1	Q3W (QW)		31, 43
Lapatinib	1000 mg PO QD		Q3W		

藥品名*	劑量 mg/m ²	給藥日	頻率	週期	參考文獻
Neratinib	240 mg PO QD	1-21	Q3W		54
Capecitabine	750 PO BID	1-14	Q3W		

★三院有個別版本

參考文獻

1. Chan S, Friendrichs K, Noel D, et al. Prospective randomized trial of docetaxel versus doxorubicin in patients with metastatic breast cancer. J Clin Oncol. 1999 Aug;17(8):2341-54.
2. Gasparini G, Dai Fior S, Panizzoni GA, et al. Weekly epirubicin versus doxorubicin as second line therapy in advanced breast cancer. A randomized clinical trial. Am J Clin Oncol. 1991 Feb;14(1):38-44.
3. O'Brien ME, Wigler N, Inbar M, et al. Reduced cardiotoxicity and comparable efficacy in a phase III trial of pegylated liposomal doxorubicin HCl (CAELYX/Doxil) versus conventional doxorubicin for first-line treatment of metastatic breast cancer. Ann Oncol. 2004 Mar;15(3):440-9.
4. Seidman AD, Tiersten A, Hudis C, et al. Phase II trial of paclitaxel by 3-hour infusion as initial and salvage chemotherapy for metastatic breast cancer. J Clin Oncol 1995;13:2575-2581.

5. Perez EA, Vogel CL, Irwin DH, et al. Multicenter Phase II Trial of Weekly Paclitaxel in Women With Metastatic Breast Cancer. *J Clin Oncol* 2001;19:4216-4223.
6. Safety and Efficacy of Two Different Doses of Capecitabine in the Treatment of Advanced Breast Cancer in Older Women. *J Clin Oncol* 2005;23:2155-2161.
7. Seidman AD, Gemcitabine as Single-Agent Therapy in the Management of Advanced Breast Cancer. *Oncology (Williston Park)*2001;15:11-14.
8. Zelek L, Barthier S, Riofrio M, et al. Weekly vinorelbine is an effective palliative regimen after failure with anthracyclines and taxanes in metastatic breast carcinoma. *Cancer*. 2001 Nov 1;92(9):2267-72.
9. Cortes J, O'Shaughnessy J, Loesch D, et al. Eribulin monotherapy versus treatment of physician's choice in patients with metastatic breast cancer (EMBRACE): a phase 3 open-label randomised study. *Lancet* 2011;377:914-923.
10. Licchetta A, Correale P, Migali C, et al. Oral Metronomic Chemo-Hormonal-Therapy of Metastatic Breast Cancer with Cyclophosphamide and Megestrol Acetate. *J Chemother* 2010;22(3):201-4.
11. Isakoff, SJ, Goss PE, et al. (2011). TBCRC009: A multicenter phase II study of cisplatin or carboplatin for metastatic triple-negative breast cancer and evaluation of p63/p73 as a biomarker of response[abstract]. *J Clin Oncol* 29(15_suppl):Abstract 1025.
12. Burris HA, 3rd. Single-agent docetaxel(Taxotere) in randomized phase III trials, *Semin Oncol* 1999;26:1-6.
13. Harvey V, Mouridsen H, Semiglazov V, et al. Phase III Trial Comparing Three Doses of Docetaxel for Second-Line Treatment of Advanced Breast Cancer. *J Clin Oncol* 2006;24(31):4963-70.
14. Rivera E, Mejia JA, Arun BJ, et al. Phase 3 study comparing the use of docetaxel on an every-3-week versus weekly schedule in the treatment of metastatic breast cancer. *Cancer* 2008 Apr 1;112(7):1455-61.
15. Gradishar WJ, Tjulandin S, Davidson N, et al. Phase III Trial of Nanoparticle Albumin-Bound Paclitaxel Compared With Polyethylated Castor Oil-Based Paclitaxel in Women With Breast Cancer. *J Clin Oncol* 2005;23:7794-7803.
16. Gradishar W, Dimitry K, Sergey C, et al. Significantly Longer Progression-Free Survival With nab-Paclitaxel Compared With Docetaxel As First-Line Therapy for Metastatic Breast Cancer. *J Clin Oncol* 2009;27(22):3611-9.
17. Silver DP, Richardson AL, Eklund AC, et al. Efficacy of Neoadjuvant Cisplatin in Triple-Negative Breast Cancer. *J Clin Oncol* 2010;28(7):1145-53.

18. Bastholt L, Dalmark M, Gjedde SB, et al. Dose-response relationship of epirubicin in the treatment of postmenopausal patients with metastatic breast cancer: a randomized study of epirubicin at four different dose levels performed by the Danish Breast Cancer Cooperative Group. *J Clin Oncol* 1996;14:1146-1155.
19. Bull JM, Tormey DC, Li SH, et al. A randomized comparative trial of adriamycin versus methotrexate in combination drug therapy. *Cancer* 1978;41:1649-1657.
20. Hortobagyi GN, Gutterman JU, Blumenschein GR, et al. Combination chemoimmunotherapy of metastatic breast cancer with 5-FU, fluorouracil, adriamycin, cyclophosphamide, and BCG. *Cancer* 1979;43:1225-33.
21. Ackland SP, Anton A, Breitbach GP, et al. Dose-Intensive Epirubicin-Based Chemotherapy Is Superior to an Intensive Intravenous Cyclophosphamide, Methotrexate, and Fluorouracil Regimen in Metastatic Breast Cancer: A Randomized Multinational Study. *J Clin Oncol* 2001;19:943-953.
22. Nabholz JM, Falkson C, Campos D, et al. Docetaxel and Doxorubicin Compared With Doxorubicin and Cyclophosphamide as First-Line Chemotherapy for Metastatic Breast Cancer: Results of a Randomized, Multicenter, Phase III Trial. *J Clin Oncol* 2003;21(6):968-75.
23. Langley RE, Camichel J, Jones AL, et al. Phase III Trial of Epirubicin Plus Paclitaxel Compared With Epirubicin Plus Cyclophosphamide As First-Line Chemotherapy for Metastatic Breast Cancer: United Kingdom National Cancer Research Institute. *J Clin Oncol* 2005;23:8322-8330.
24. Bonadonna G, Brusamolino E, Valagussa P, et al. Combination Chemotherapy as an Adjuvant Treatment in Operable Breast Cancer. *N Engl J Med* 1976;294:405-410.
25. Mavroudis D, Papakotoulas P, Ardavanis A, et al. Randomized phase III trial comparing docetaxel plus epirubicin versus docetaxel plus capecitabine as first-line treatment in women with advanced breast cancer. *Ann Oncol* 21:48(2010).
26. Albain KS, Nag S, Calderillo-Ruiz G, et al. Gemcitabine Plus Paclitaxel Versus Paclitaxel Monotherapy in Patients With Metastatic Breast Cancer and Prior Anthracycline Treatment. *J Clin Oncol* 2008;26(24):3950-7.
27. O'Shaughnessy J, Schwartzberg LS, Danso MA, et al. A randomized phase III study of iniparib (BSI-201) in combination with gemcitabine/carboplatin (G/C) in metastatic triple-negative breast cancer (TNBC). [abstract]. *J Clin Oncol* 2011;29(Suppl_15):Abstract 1007.

28. Miller K, Wang M, Gralow J, et al. Paclitaxel plus Bevacizumab versus Paclitaxel Alone for Metastatic Breast Cancer. *N Engl J Med* 2007;357:2666-2676.
29. Baselga J, Cortes J, Kim SB, et al. Pertuzumab plus Trastuzumab plus Docetaxel for Metastatic Breast Cancer. *N Engl J Med* 2012;366:109-119.
30. Phase II study of pertuzumab, trastuzumab, and weekly paclitaxel in patients with HER2-overexpressing metastatic breast cancer [abstract]. *Cancer Research* 2012;72:Abstract P5-18-20.
31. Leyland-Jones B, Gelmon K, Ayoub JP, et al. Pharmacokinetics, Safety, and Efficacy of Trastuzumab Administered Every Three Weeks in Combination With Paclitaxel. *J Clin Oncol* 2003;21:3965-3971.
32. Perez EA, Suman VJ, Rowland KM, et al. Two Concurrent Phase II Trials of Paclitaxel/Carboplatin/Trastuzumab (Weekly or Every-3-Week Schedule) as First-Line Therapy in Women with HER2-Overexpressing Metastatic Breast Cancer: NCCTG Study 983252. *Clin Breast Cancer* 2005;6:425-432.
33. Slamon DJ, Leyland-Jones B, Shak S, et al. Use of Chemotherapy plus a Monoclonal Antibody against HER2 for Metastatic Breast Cancer That Overexpresses HER2. *N Engl J Med* 2001;344:783-792.
34. Seidman A, Berry DA, Cirincione C, et al. Randomized Phase III Trial of Weekly Compared With Every-3-Weeks Paclitaxel for Metastatic Breast Cancer, With Trastuzumab for all HER-2 Overexpressors and Random Assignment to Trastuzumab or Not in HER-2 Nonoverexpressors: Final Results of Cancer and Leukemia Group B Protocol 9840. *J Clin Oncol* 2008;26:1642-1649.
35. Marty M, Cognetti F, Maraninchi D, et al. Randomized Phase II Trial of the Efficacy and Safety of Trastuzumab Combined With Docetaxel in Patients With Human Epidermal Growth Factor Receptor 2–Positive Metastatic Breast Cancer Administered As First-Line Treatment: The M77001 Study Group. *J Clin Oncol* 2005;23:4265-4274.
36. Esteva FJ, Valero V, Booser D, et al. Phase II Study of Weekly Docetaxel and Trastuzumab for Patients With HER-2–Overexpressing Metastatic Breast Cancer. *J Clin Oncol* 2002;20:1800-1808.
37. Burstein HJ, Keshaviah A, Baron AD, et al. Trastuzumab plus vinorelbine or taxane chemotherapy for HER2-overexpressing metastatic breast cancer: The trastuzumab and vinorelbine or taxane study. *Cancer* 2007;110:965-972.
38. von Minckwitz G, du Bois A, Schmidt M, et al. Trastuzumab Beyond Progression in Human Epidermal Growth Factor Receptor 2–Positive Advanced Breast Cancer: A German Breast Group 26/Breast International Group 03-05 Study. *J Clin*

- Oncol 2009;27:1999-2006.
39. Cobleigh MA, Vogel CL, Tripathy D, et al. Multinational Study of the Efficacy and Safety of Humanized Anti-HER2 Monoclonal Antibody in Women Who Have HER2-Overexpressing Metastatic Breast Cancer That Has Progressed After Chemotherapy for Metastatic Disease. *J Clin Oncol* 1999;17:2639-2648.
 40. Verma S, Miles D, Gianni L, et al. Trastuzumab Emtansine for HER2-Positive Advanced Breast Cancer [Supplementary appendix available online]. *N Engl J Med* 2012;367:1783-1791.
 41. Geyer C, Forster J, Lindquist D, et al. Lapatinib plus Capecitabine for HER2-Positive Advanced Breast Cancer. *N Engl J Med* 2006;355:2733-2743.
 42. Bartsch R, Wenzel C, Altorjai G, et al. Capecitabine and Trastuzumab in Heavily Pretreated Metastatic Breast Cancer. *J Clin Oncol* 2007;25:3853-3858.
 43. Blackwell KL, Burstein H, et al. Randomized Study of Lapatinib Alone or in Combination With Trastuzumab in Women With ErbB2-Positive, Trastuzumab-Refractory Metastatic Breast Cancer. *J Clin Oncol* 2010;28(7):1124-30.
 44. Kun-Ming Rau, Shan-Hsuan Li ,et al. Weekly Paclitaxel Combining with Gemcitabine is an Effective and Safe Treatment for Advanced Breast Cancer Patients. *Jpn J Clin Oncol* 2011;41(4)455– 461.
 45. Jin Hyun Park, Seock-Ah Im,,et al. Cyclophosphamide, Methotrexate, and 5-Fluorouracil as Palliative Treatment for Heavily Pretreated Patients with Metastatic Breast Cancer: A Multicenter Retrospective Analysis. *J Breast Cancer*. 2017 Dec; 20(4): 347–355.
 46. Mark Robson, Seock-Ah Im, Elzbieta Senkus, et al. Olaparib for Metastatic Breast Cancer in Patients with a Germline BRCA Mutation. *N Engl J Med* 2017; 377:523-533.
 47. Litton J, Rugo H, Ettl J, et al. Talazoparib in patients with advanced breast cancer and a germline BRCA mutation. *N Engl J Med* 2018;379:753-63.
 48. Schmid P, Adams S, Rugo HS, et al. Atezolizumab and Nab-Paclitaxel in Advanced Triple-Negative Breast Cancer. [supplementary appendix appears online]. *N Engl J Med*. 2018 Nov 29;379:2108-2121.
 49. Pathological Response and Survival in Triple-Negative Breast Cancer Following Neoadjuvant Carboplatin plus Docetaxel. *Clin Cancer Res* December 1 2018 (24) (23) 5820-5829.

50. A Phase II Trial of Docetaxel and Carboplatin as First-Line Chemotherapy for Metastatic Breast Cancer: NCCTG Study N9932. *Oncology* 2005;69:117-121.
51. Perez EA, Hillman DW, Stella PJ, et al. A phase II study of paclitaxel plus carboplatin as first-line chemotherapy for women with metastatic breast carcinoma. *Cancer* 2000;88(1):124-131.
52. Loesch D, Robert N, Asmar L, et al. Phase II multicenter trial of a weekly paclitaxel and carboplatin regimen in patients with advanced breast cancer. *J Clin Oncol* 2002;20(18):3857-3864.
53. Yardley DA, Coleman R, Conte P, et al. nab-Paclitaxel plus carboplatin or gemcitabine versus gemcitabine plus carboplatin as first-line treatment of patients with triple-negative metastatic breast cancer: results from the tnAcity trial. *Ann Oncol* 2018;29(8):1763-1770.
54. Saura C, Oliveira M, Feng YH, et al. Neratinib plus capecitabine versus lapatinib plus capecitabine in patients with HER2-positive metastatic breast cancer previously treated with ≥ 2 HER2-directed regimens: Findings from the multinational, randomized, phase 3 NALA trial. Presented at the American Society of Clinical Oncology (ASCO) Annual Meeting. May 31-June 4, 2019; Chicago, IL. *J Clin Oncol* 2019;37:(suppl; abstr 1002).
55. Cortes J, Cescon DW, Rugo HS, et al. Pembrolizumab plus chemotherapy versus placebo plus chemotherapy for previously untreated locally recurrent inoperable or metastatic triple-negative breast cancer (KEYNOTE-355): a randomised, placebo-controlled, double-blind, phase 3 clinical trial. *Lancet*. 2020 Dec 5;396(10265):1817-1828.
56. Drilon A, Laetsch TW, Kummar W, et al. Efficacy of larotrectinib in TRK fusion-positive cancers in adults and children. *N Engl J Med* 2018;378(8):731-739.
57. Drilon A, Siena S, Ou SI, et al. Safety and antitumor activity of the multitargeted pan-TRK, ROS1, and ALK inhibitor entrectinib: Combined results from two phase I trials (ALKA-372-001 and STARTRK-1). *Cancer Discov* 2017;7(4):400-409.
58. Le DT, Durham JN, Smith KN, et al. Mismatch repair deficiency predicts response of solid tumors to PD-1 blockade. *Science* 2017;357(6349):409-413.
59. Marabelle A, Fakih M, Lopez J, et al. Association of tumour mutational burden with outcomes in patients with advanced solid tumours treated with pembrolizumab: prospective biomarker analysis of the multicohort, open-label, phase 2 KEYNOTE-158 study. *Lancet Oncol*. 2020;21(10):1353-1365.

Endocrine Therapy Regimens for Recurrent or Metastatic Breast Cancer

PREMENOPAUSAL

SERM

藥品名	劑量 mg/m ²	給藥日	頻率	週期	參考文獻
Tamoxifen	20-40 mg PO QD				1

Ovarian ablation or suppression

藥品名	劑量 mg/m ²	給藥日	頻率	週期	參考文獻
Goserelin Acetate	3.6 mg SC		Q4W		5

藥品名	劑量 mg/m ²	給藥日	頻率	週期	參考文獻
Leuprolide Acetate	3.75 mg SC		Q4W		6

Postmenopausal

Aromatase inhibitor

藥品名	劑量 mg/m ²	給藥日	頻率	週期	參考文獻
Exemestane	25 mg PO QD				2

藥品名	劑量 mg/m ²	給藥日	頻率	週期	參考文獻
Anastrozole	1 mg PO QD				3

藥品名	劑量 mg/m ²	給藥日	頻率	週期	參考文獻
Letrozole	2.5 mg PO QD				4

SERD

藥品名	劑量 mg/m ²	給藥日	頻率	週期	參考文獻
Fulvestrant	500 IM		Q4W		7

CDK4/6 inhibitor+AI (for Her2-negative)

藥品名	劑量 mg/m ²	給藥日	頻率	週期	參考文獻
Palbociclib	125 mg PO QD	1-21	Q4W		8
Letrozole	2.5 mg PO QD	1-21	Q4W		

藥品名	劑量 mg/m ²	給藥日	頻率	週期	參考文獻
Palbociclib	125 mg PO QD	1-21	Q4W		8
Anastrozole	1 mg PO QD	1-21	Q4W		

藥品名	劑量 mg/m ²	給藥日	頻率	週期	參考文獻
Palbociclib	125 mg PO QD	1-21	Q4W		8
Exemestane	25 mg PO QD	1-21	Q4W		

藥品名	劑量 mg/m ²	給藥日	頻率	週期	參考文獻
Ribociclib	600 mg PO QD	1-21	Q4W		9
Letrozole	2.5 mg PO QD	1-21	Q4W		

藥品名	劑量 mg/m ²	給藥日	頻率	週期	參考文獻
Ribociclib	600 mg PO QD	1-21	Q4W		9
Anastrozole	1 mg PO QD	1-21	Q4W		

藥品名	劑量 mg/m ²	給藥日	頻率	週期	參考文獻
Ribociclib	600 mg PO QD	1-21	Q4W		9
Exemestane	25 mg PO QD	1-28	Q4W		

藥品名	劑量 mg/m ²	給藥日	頻率	週期	參考文獻
Abemaciclib	150 mg PO BID				15
Letrozole	2.5 mg PO QD				

藥品名	劑量 mg/m ²	給藥日	頻率	週期	參考文獻
Abemaciclib	150 mg PO BID				15
Anastrozole	1 mg PO QD				

藥品名	劑量 mg/m ²	給藥日	頻率	週期	參考文獻
Abemaciclib	150 mg PO BID				15
Exemestane	25 mg PO QD				

CDK4/6 inhibitor + SERD

藥品名	劑量 mg/m ²	給藥日	頻率	週期	參考文獻
Palbociclib	125 mg PO QD	1-21	Q4W		10
Fulvestrant	500 IM	1, 15 → 1	Q4W		

藥品名	劑量 mg/m ²	給藥日	頻率	週期	參考文獻
Palbociclib	600 mg PO QD	1-21	Q4W		11
Fulvestrant	500 IM	1, 15 → 1	Q4W		

藥品名	劑量 mg/m ²	給藥日	頻率	週期	參考文獻
Abemaciclib	150 mg PO BID				16
Fulvestrant	500 IM	1, 15 → 1	Q4W		

藥品名	劑量 mg/m ²	給藥日	頻率	週期	參考文獻
Everolimus	10 mg PO QD				12
Exemestane	25 mg PO QD				

藥品名	劑量 mg/m ²	給藥日	頻率	週期	參考文獻
Everolimus	10 mg PO QD		Q4W		13
Fulvestrant	500 IM	1, 15 → 1	Q4W		

藥品名	劑量 mg/m ²	給藥日	頻率	週期	參考文獻
Everolimus	10 mg PO QD				14
Tamoxifen	20-40 mg PO QD				

Fulvestrant + Alpelisib for PIK3CA-mutated tumors

藥品名	劑量 mg/m ²	給藥日	頻率	週期	參考文獻
Alpelisib	300 mg PO QD				17
Fulvestrant	500 IM	1, 15 → 1	Q4W		

USEFUL IN CERTAIN CIRCUMSTANCES

Abemaciclib

藥品名	劑量 mg/m ²	給藥日	頻率	週期	參考文獻
Abemaciclib	200 mg PO BID				18

參考文獻

1. Product Information: tamoxifen citrate oral tablets, tamoxifen citrate oral tablets. Watson Laboratories (per manufacturer), Corona, CA, 2011.
2. Product Information: AROMASIN(R) oral tablets, exemestane oral tablets. Pharmacia & Upjohn Company (per FDA), New York, NY, 2013.
3. Product Information: ARIMIDEX(R) oral tablet, anastrozole oral tablet. AstraZeneca Pharmaceuticals LP, Wilmington, DE, 2009.
4. Product Information: Femara oral tablets, letrozole oral tablets. Novartis Pharmaceuticals Corporation, East Hanover, NJ, 2010.
5. Product Information: ZOLADEX(R) implant 3.6mg, goserelin acetate implant implant 3.6mg. AstraZeneca, Wilmington, DE, 2009.
6. Boccardo F, Rubagotti A, Amoroso D, et al: Endocrinological and clinical evaluation of two depot formulations of leuprolide

- acetate in pre- and perimenopausal breast cancer patients. *Cancer Chemother Pharmacol* 1999; 43:461-466.
7. Rita S. Mehta, M.D., William E. Barlow, Ph.D., et al. Combination Anastrozole and Fulvestrant in Metastatic Breast Cancer.
 8. Turner NC, Ro J, Andre F, et al. Palbociclib in Hormone-Receptor-Positive Advanced Breast Cancer. *N Engl J Med* 2015;373:209-219.
 9. Gabor N. Hortobagyi, M.D., Salomon M. Stemmer, M.D., et al. Ribociclib as First-Line Therapy for HR-Positive, Advanced Breast Cancer. *N Engl J Med* 375;18 November 3, 2016
 10. Massimo Cristofanilli, Nicholas C Turner, et al. Fulvestrant plus palbociclib versus fulvestrant plus placebo for treatment of hormone-receptor-positive, HER2-negative metastatic breast cancer that progressed on previous endocrine therapy (PALOMA-3): final analysis of the multicentre, double-blind, phase 3 randomised controlled trial. *Lancet Oncol* 2016; 17: 425-39.
 11. Dennis J. Slamon, Patrick Neven, et al. Phase III Randomized Study of Ribociclib and Fulvestrant in Hormone Receptor-Positive, Human Epidermal Growth Factor Receptor 2-Negative Advanced Breast Cancer: MONALEESA-3. *J Clin Oncol* 36:2465-2472.
 12. José Baselga, M.D., Ph.D., Mario Campone, M.D., et al. Everolimus in Postmenopausal Hormone Receptor-Positive Advanced Breast Cancer. *N Engl J Med* 366;6 nejm.org february 9, 2012.
 13. Noah Kornblum, Fengmin Zhao, et al. Randomized Phase II Trial of Fulvestrant Plus Everolimus or Placebo in Postmenopausal Women With Hormone Receptor-Positive, Human Epidermal Growth Factor Receptor 2-Negative Metastatic Breast Cancer Resistant to Aromatase Inhibitor Therapy: Results of PrE0102. *J Clin Oncol* 36:1556-1563.
 14. Thomas Bachelot, Céline Bourcier, et al. Randomized Phase II Trial of Everolimus in Combination With Tamoxifen in Patients With Hormone Receptor-Positive, Human Epidermal Growth Factor Receptor 2-Negative Metastatic Breast Cancer With Prior Exposure to Aromatase Inhibitors: A GINECO Study. *J Clin Oncol* 30:2718-2724.
 15. Goetz MP, Toi M, et al. MONARCH 3: Abemaciclib As Initial Therapy for Advanced Breast Cancer. *J Clin Oncol*. 2017;35(32):3638-3646.
 16. Sledge GW Jr, Toi M, et al. The Effect of Abemaciclib Plus Fulvestrant on Overall Survival in Hormone Receptor-Positive,

- ERBB2-Negative Breast Cancer That Progressed on Endocrine Therapy—MONARCH 2. *AMA Oncol.* 2020;6(1):116-124.
17. André F, Ciruelos E, et al. Alpelisib for PIK3CA-Mutated, Hormone Receptor-Positive Advanced Breast Cancer. *N Engl J Med* 2019; 380:1929-1940.
18. Dickler MN, Tolaney SM, et al. MONARCH 1, a phase 2 study of abemaciclib, a CDK4 and CDK6 inhibitor, as a single agent, in patients with refractory HR+/HER2- metastatic breast cancer. *Clin Cancer Res.* 2017; 23(17): 5218–5224.

《 乳癌放射治療共識 》

一、全乳放射治療

應以電腦斷層影像定義標靶體積與正常危急器官

適應症：侵襲癌或原位癌經乳房保留手術術後

◎照射範圍：患側乳房

◎照射劑量：50-50.4Gy / 次數：25-28 次 或 40-42.5Gy / 次數：15-16 次

◎追加照射範圍：腫瘤切除空腔與其周圍

◎追加照射劑量：10-16Gy / 次數：4-8 次

治療技術：使用斜角對照配合強度調控放射治療技術，包含弧形及螺旋放射規劃，可考慮搭配影像導引治療，與心肺保護技術。可選擇先後給予胸壁照射與追加照射，或是在治療計畫中同步規劃高低劑量區，同步進行兩部位照射。

二、胸壁放射治療

應以電腦斷層影像定義標靶體積與正常危急器官

適應症：侵襲癌經乳房全切除手術術後有較大的原發腫瘤 (T stage \geq T3)，臨床或病理認定腫瘤侵犯淋巴結 (N stage \geq N1)

◎照射範圍：患側胸壁、手術疤痕與其周圍

◎照射劑量：50-50.4Gy / 次數：25-28 次

◎追加照射範圍：手術疤痕周圍

◎追加照射劑量：10-16Gy / 次數：4-8 次

治療技術：使用斜角對照配合強度調控放射治療技術，包含弧形及螺旋放射規劃，可考慮搭配影像導引治療，與心肺保護技術。可選擇先後給予胸壁照射與追加照射，或是在治療計畫中同步規劃高低劑量區，同步進行兩部位照射。

三、淋巴引流區放射治療

應以電腦斷層影像定義標靶體積與正常危急器官

適應症：較大的原發腫瘤 (T stage \geq T3)、臨床或病理認定腫瘤侵犯至少一個淋巴結 (N stage \geq N1)

◎照射範圍：患側高風險淋巴轉移範圍，包括腋下、鎖骨下、鎖骨上淋巴引流區。臨床懷疑內乳淋巴結轉移或正常組織容受許可時，可選擇性考慮照射內乳淋巴引流區。

◎照射劑量：50-50.4Gy / 次數：25-28 次 追加照射劑量

◎追加照射範圍：未能手術之侵犯或腫大淋巴腺

◎追加照射劑量：10-16Gy / 次數：4-8 次

治療技術：使用強度調控放射治療技術，選擇性使用斜角對照，包含弧形及螺旋放射規劃，可考慮搭配影像導引治療，與心肺保護技術。

《參考文獻》

1. NCCN Clinical Practice in Oncology: Breast Cancer V.1.2022
2. Jemal A, Siegel R, Xu J, Ward E. Cancer statistics, 2021. CA Cancer J Clin 2010;60:277-300.
3. Effects of chemotherapy and hormonal therapy for early breast cancer on recurrence and 15-year survival: an overview of the randomised trials. Lancet 2005;365:1687-1717.
4. Edge SB, Byrd DR, Compton CC, et al., eds. AJCC Cancer Staging Manual, 7th Edition. New York: Springer; 2010
5. Allred DC, Carlson RW, Berry DA, et al. NCCN Task Force Report: Estrogen Receptor and Progesterone Receptor Testing in Breast Cancer by Immunohistochemistry. J Natl Compr Canc Netw 2009;7 Suppl 6:1-1.
6. Dybdal N, Leiberman G, Anderson S, et al. Determination of HER2 gene amplification by fluorescence in situ hybridization and concordance with the clinical trials immunohistochemical assay in women with metastatic breast cancer evaluated for treatment with trastuzumab. Breast Cancer Res Treat 2005;93:3-11.
7. Chuba PJ, Hamre MR, Yap J, et al. Bilateral risk for subsequent breast cancer after lobular carcinoma-in-situ: analysis of

- surveillance, epidemiology, and end results data. *J Clin Oncol* 2005;23:5534-5541.
8. Anderson BO, Calhoun KE, Rosen EL. Evolving concepts in the management of lobular neoplasia. *J Natl Compr Canc Netw* 2006;4:511-522.
 9. Fisher B, Costantino JP, Wickerham DL, et al. Tamoxifen for the prevention of breast cancer: current status of the National Surgical Adjuvant Breast and Bowel Project P-1 study. *J Natl Cancer Inst* 2005;97:1652-1662.
 10. International Commission on Radiation Units and Measurements. ICRU Report No 62: Prescribing, Recording and Reporting Photon Beam Therapy (Supplement to ICRU Report 50). Bethesda, MD: ICRU Publications 1999.
 11. Radiation therapy for the whole breast: Executive summary of an American Society for Radiation Oncology (ASTRO) evidence-based guideline, *Practical Radiation Oncology*, 2018; 8:145-152
 12. Vargas C, Kestin L, Go N, et al. Factors associated with local recurrence and cause-specific survival in patients with ductal carcinoma in situ of the breast treated with breast-conserving therapy or mastectomy. *Int J Radiat Oncol Biol Phys* 2005;63:1514-1521.
 13. McCormick B. Randomized Trial Evaluating Radiation following Surgical Excision for “Good Risk” DCIS: 12-Year Report from NRG/RTOG 9804. *Int J Radiat Oncol Biol Phys* 2018;102: P1603

